

Cookie Exchange - Sign up for this super fun event happening Tuesday Dec. 12th.  
MOD Pizza Day - Eat at MOD Pizza & present flyer to get NHE some of the profit!  
BSF Awards - See who won!  
Hour of Code - Wrap-up.  
NHE Amazon Portal - You spend the same as you would have and NHE gets part of the profit!



## Cookie Exchange!



Get your cookies ready to bring in  
on  
Tuesday  
December 12th

One of the best events is happening this week. The Annual Cookie Exchange for our beloved NHE staff members.

- Every year, the PTA puts together a cookie exchange for our wonderful staff as a way to say "Thank You" for all that they do for our kids.
- Cookies are donated by NHE families & each staff member gets to choose a dozen wonderful cookies to take home and enjoy during their break.
- We will be collecting your cookies in the staff room the morning of Tuesday, December 12th.

**We need close to 80 dozen cookies!**

- Please consider baking some extra cookies to donate for this much appreciated event. As always, store bought cookies or other baked goods are welcome.

**We request NO NUTS, please.**

[Sign Up Here](#)

---

## MOD Pizza Day Wednesday Dec. 13th



Eat at MOD Pizza  
on Factoria Blvd.  
Wednesday December 13th

Present this flyer



*printed or digitally* & NHE gets a percentage of the profit from MOD Pizza!

[Click Here for the flyer](#)

---



Remember  
Do your holiday shopping through  
NHE's Amazon Smile

**The Amazon Smile program is an easy way to support NHE**

Shop using NHE's very own portal.  
Use it now and all year long!

Click here



### [Newport Heights Elementary Amazon Smile portal](#)

- It's easy and effective. No extra giving, just shop like you normally would and our school gets a percentage of the profit from Amazon.
- 100% secure! All personal and account information stays with Amazon.
  - The only thing the PTA sees is a check from Amazon for our percentage of the proceeds.

Already shopping through the portal on your laptop or PC?

- Make it easy to shop on your mobile by [changing your Amazon app to Amazon Smile icon](#).
  - They are different and it does matter!
  - Even our PTA board members didn't shop through the portal very often until they made this change.
  - Here are the [simple directions to do it](#).

Go from this



To this

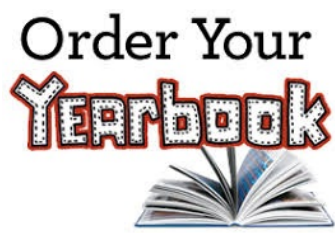


Happy Shopping!

~THANK YOU~

---

Last days to order NHE Yearbook  
at discount rate



by **December 15th**

To get the discounted rate

After this date the price goes up!

[Click Here to purchase yours](#)

---

## Hour of Code - wrap up



**Thank you  
to the volunteers who put the  
Hour of Code together this year!**

The tables were full of family and friends.

The new laptops worked and there were plenty for everyone!

Coding was learned, and people had fun.

All in all, a great success!

---

**Thanks to you, NHE PTA has earned a  
membership award!**



The Bronze Level Award is given to local PTAs for enrolling 50% or more of the previous year's membership by September 30th.

---

### Here are some things to know about PTA memberships

- The more members our PTA has, the more voting delegates we are allowed.
  - This gives us a bigger voice in voting on issues that involve our students education.
- The larger our membership base is, the more support we give to the State and National PTA which is the largest volunteer run child advocacy organization in the country.
  - At these upper levels the PTA provide dedicated resources and support to local PTA's.
    - Training, management resources, guidelines on running a non-profit, and many other things a local PTA needs to serve its community.
- Being a PTA member entitles you to certain discounts and other benefits
  - For discount and benefit information, use the links below. Your NHE PTA membership will provide you access to both the Washington State and the National PTA benefits
  - [Washington state PTA discount & benefit page](#)
  - [National PTA discount & benefit page](#)



If you haven't done so you can still get your PTA Membership and all the annual sign-up things you need. All in one visit and you're done!

### **Purchase everything in one place**

- [PTA membership](#)
- Yearbook - [\\$19 Early Bird Discount until December 15th](#)

### **See what volunteer opportunities are open**

- Food & Refreshment Helper - [still needed](#)
- The School Play, The PTA Board - [still needed](#)

### **You can even make direct donations**

- To the PTA's general fund, or the Give A Book fund, or Yearbook and Spirit Wear Funds.

It's all there and easy to do.  
Click on this link to go directly to the PTA purchase page:

[Annual Sign Up Packet](#)

---

## **Bellevue Schools Foundation**

### **Congratulations! To our BSF 2017-18 Grant Award Winners**

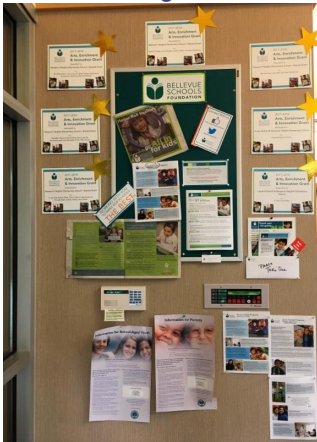
Newport Heights Elementary and our very own Ms. Butler & Eckhardt where awarded Arts, Enrichment & Innovation Grants from Bellevue Schools Foundation.



Ms. Kristin Butler  
for  
Engineering our Future



Ms. Layne Eckhardt  
for  
A Learning Garden



Newport Heights  
Elementary  
for  
A visit with Oliver Chin  
Klondike  
Our Revolution  
Island of Hope  
Become your own Hero

Thank you BSF, our students will benefit greatly from these.



BELLEVUE  
SCHOOLS  
FOUNDATION

[Click here for more information about  
BSF](#)

## Community & After School Programs - External

UPDATED WEEKLY: There are many programs and classes offered in our area by various organization that are NOT held at NHE. We have collected the flyers in one location on the PTA website for you to get more information.

[Tree Planting Volunteers](#) / [Junior Golf](#) / [Kidstage/ Kelsey Creek Farm](#) / [Camp Kindness Winter camp](#) / [Ice Skating](#) / [Rugby](#) / [Cultural Exchanges](#) / [Swim](#) / [Math](#) / [Karate](#) / [Piano](#) / [TaeKwonDo](#) / [STEAM learning](#) / [Wrestling](#) / [Parenting Classes](#) / [Volunteer Work](#) / [Reading programs](#)

ALL INFORMATIONAL FLYERS CAN BE FOUND [HERE](#)

---

Thank you for reading the Dolphin Dispatch.  
We hope you have a great week.

Visit Our Website

Newport Heights Elementary - PTA  
5225 119th Ave SE  
Bellevue, WA 98006  
[Communications@nhe-pta.org](mailto:Communications@nhe-pta.org) | <http://nhe-pta.org> |

STAY CONNECTED:

